

Test: Primary 5 Science (Term 1) - Nanyang (2020)

Points: 15 points

Name: _____

Score: _____

Date: _____

Signature: _____

Select multiple choice answers with a cross or tick:

- Only select one answer
- Can select multiple answers

Question 1 of 14

Primary 5 Science (Term 1) 2 pts

Samantha identified 3 similar flowers from Plant A. She labelled them flowers P, Q and R. She removed one different part, X, Y and Z, from each flower without removing the flower from the plant. She then dusted pollen grains onto flowers P, Q and R.

After one month, she made the following observation.

Flower	Part removed	Did the flower become a fruit?
P	X	Yes
Q	Y	No
R	Z	Yes

What could parts X, Y and Z most likely be?

- A)

X	Y	Z
anther	stigma	ovary
- B)

X	Y	Z
ovary	petal	stigma
- C)

X	Y	Z
ovary	stigma	anther
- D)

X	Y	Z
petal	ovary	anther

Question 2 of 14

Primary 5 Science (Term 1) 2 pts

Seeds J, K, L and M from the same plant are placed under different conditions as shown in the table below. A tick (✓) represents the presence of the condition for the respective seeds.

Seed	Conditions			
	Air	Water	Light	Temperature (°C)
J	✓	✓	✓	5
K		✓	✓	40
L	✓		✓	5
M	✓	✓		40

Which seed, J, K, L or M, would most likely germinate?

-
- A) J
- B) K
- C) L
- D) M

Question 3 of 14

Primary 5 Science (Term 1)

2 pts

3 types of plants, E, F and G, were planted in an area as shown in diagram A below.

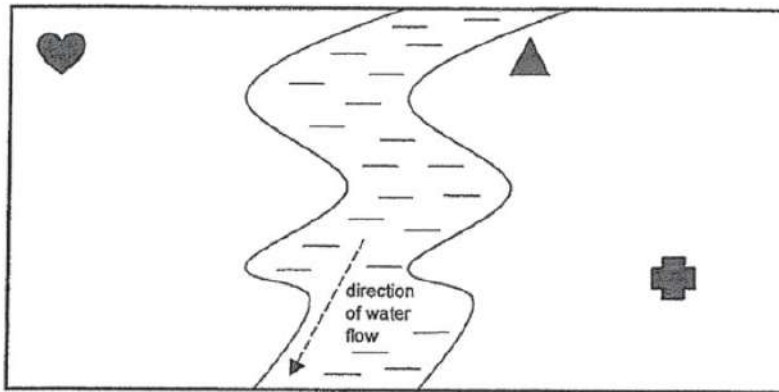


Diagram A

Plant E	
Plant F	
Plant G	

8 years later, more of plants, E, F and G, were found growing on different parts of the same area, as shown in diagram B below.

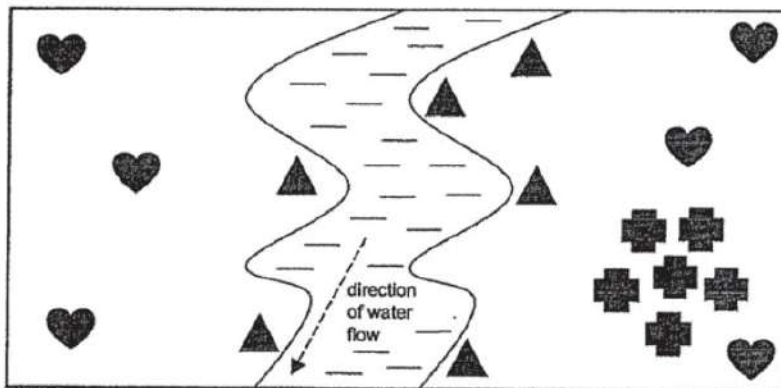


Diagram B

Based only on the above diagrams, what are the methods of dispersal for plants, E, F and G?

A)

Plant E 	Plant F 	Plant G
--------------------	--------------------	--------------------

animal | splitting | water

B)

splitting | animal | water

C)

animal | wind | splitting

D)

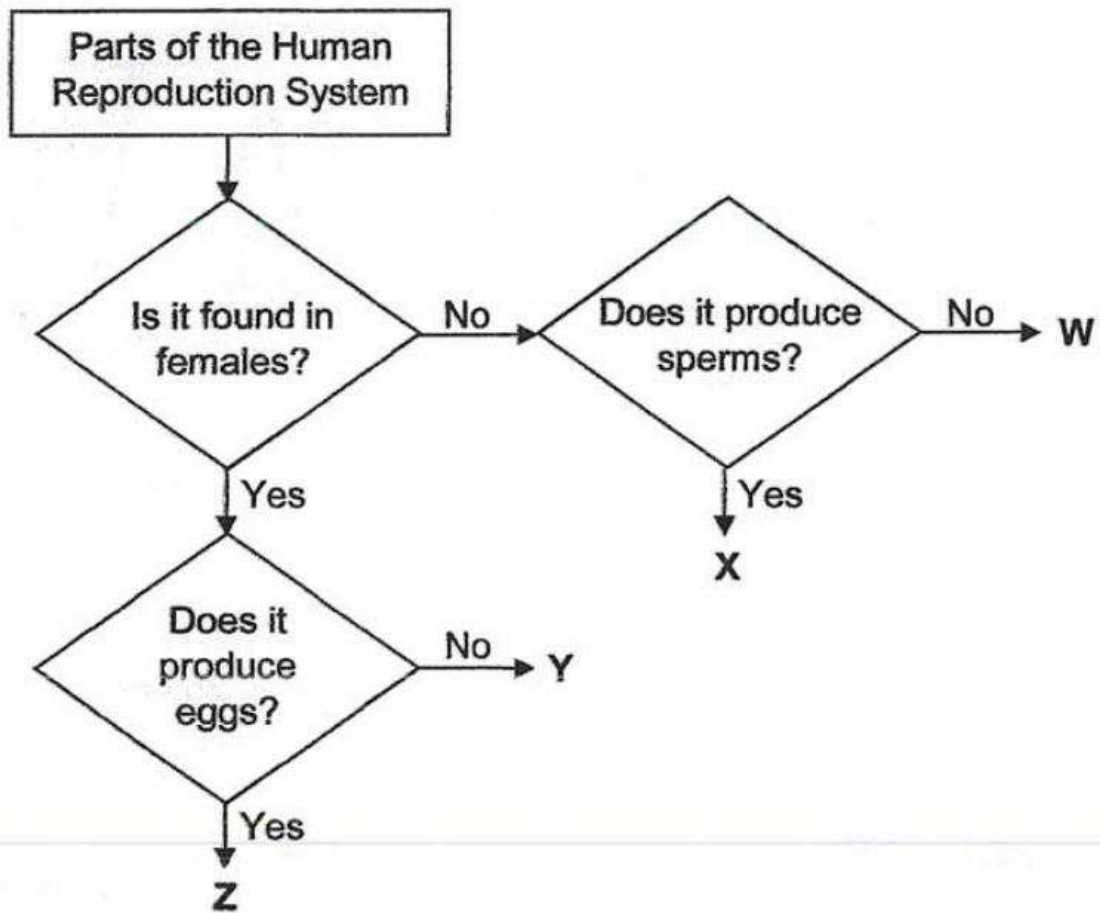
water | animal | wind

Question 4 of 14

Primary 5 Science (Term 1)

2 pts

Study the flowchart below carefully.



Which of the following correctly identifies parts W, X, Y and Z?

- A)

W	X	Y	Z
testis	penis	ovary	vagina
- B)

W	X	Y	Z
testis	penis	womb	ovary
- C)

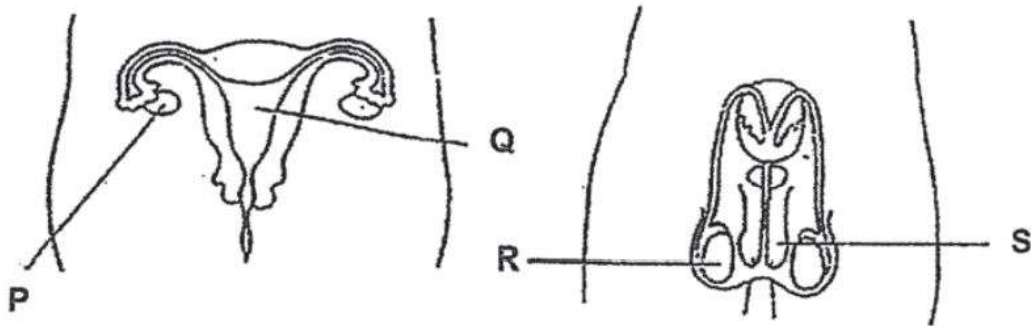
W	X	Y	Z
penis	testis	ovary	womb
- D)

W	X	Y	Z
penis	testis	vagina	ovary

Question 5 of 14

Primary 5 Science (Term 1) 2 pts

The diagram below shows the male and female reproductive systems.



Which parts of the reproductive systems above produce reproductive cells?

- A) P and R only
- B) P and S only
- C) Q and R only
- D) Q and S only

Question 6 of 14

Primary 5 Science (Term 1) 2 pts

Which of the following characteristics can be inherited by a child from his parents?

- A Long hair
- B Double eyelid
- C Attached earlobe

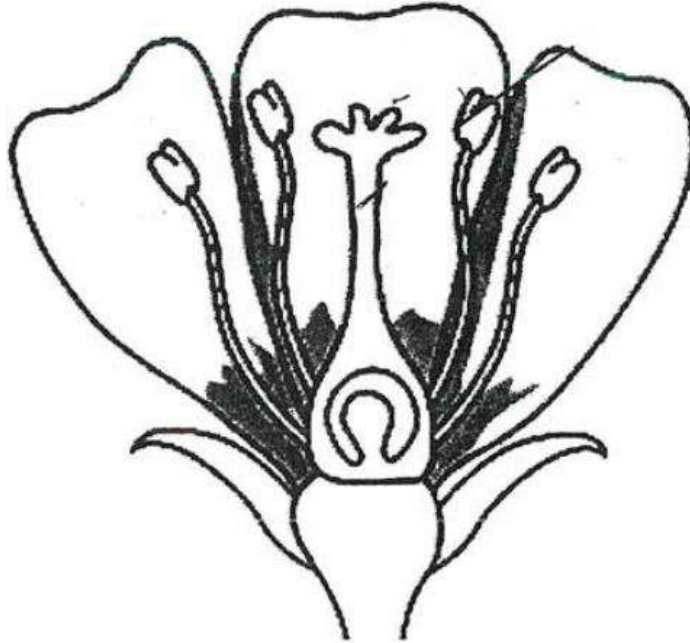
- A) A and B only
- B) A and C only
- C) B and C only
- D) A, B and C

Question 7 of 14

Primary 5 Science (Term 1)

0 pts

The diagram below shows the cut section of a flower of Plant X.



Flower of plant X

Draw an arrow to show how pollination can take place within the same flower. (1 mark)

This question is designed for extended answers that parent/ teacher will have to assign and guide child to attempt after the test has been completed.

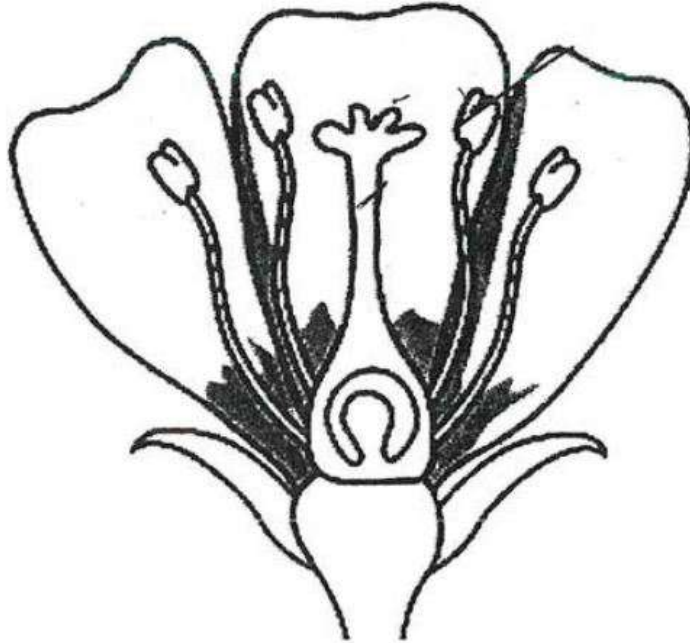
Grading: This question type is not graded on this system and will not affect the final score as it was designed in such a way that it requires manual assistance.

Question 8 of 14

Primary 5 Science (Term 1)

0 pts

The diagram below shows the cut section of a flower of Plant X.



Flower of plant X

A bee was observed feeding on the nectar of the flower. Explain how the bee helps in the reproduction process of plant X. (1 mark)

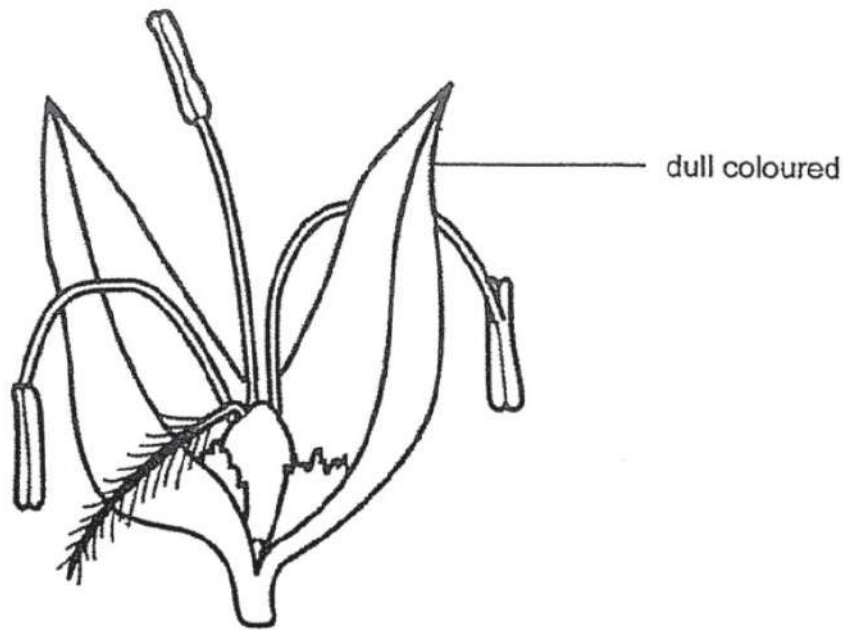
This question is designed for extended answers that parent/ teacher will have to assign and guide child to attempt after the test has been completed.

Grading: This question type is not graded on this system and will not affect the final score as it was designed in such a way that it requires manual assistance.

Question 9 of 14

Primary 5 Science (Term 1)

0 pts



State two characteristics that would most likely show that the flower above can be pollinated by wind. [2]

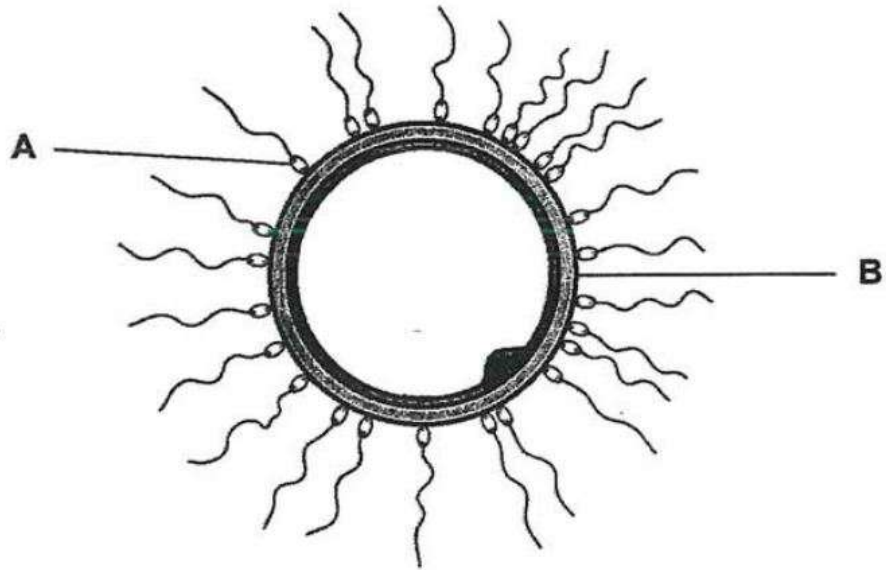
This question is designed for extended answers that parent/ teacher will have to assign and guide child to attempt after the test has been completed.

Grading: This question type is not graded on this system and will not affect the final score as it was designed in such a way that it requires manual assistance.

Question 10 of 14

Primary 5 Science (Term 1) 0.5 pts

Study the diagram below carefully.

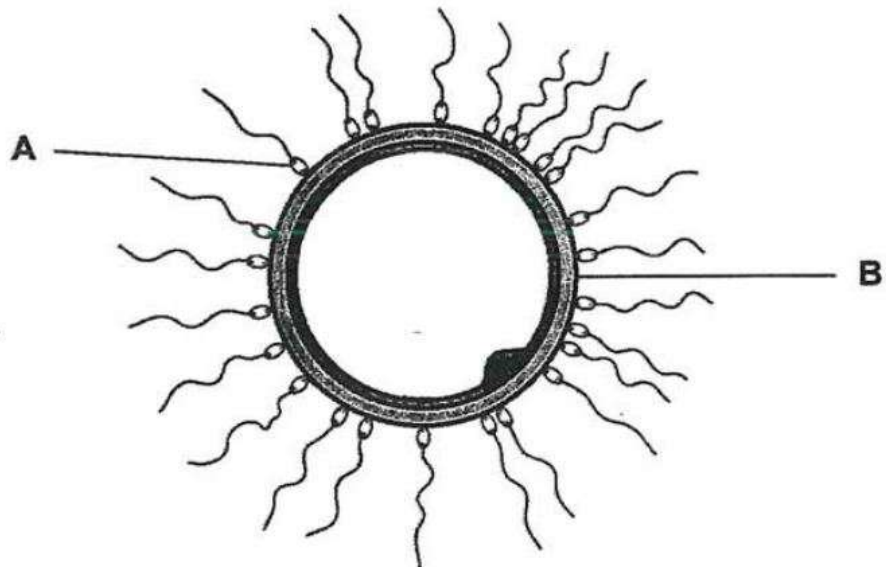


Identify part A.

Question 11 of 14

Primary 5 Science (Term 1) 0.5 pts

Study the diagram below carefully.



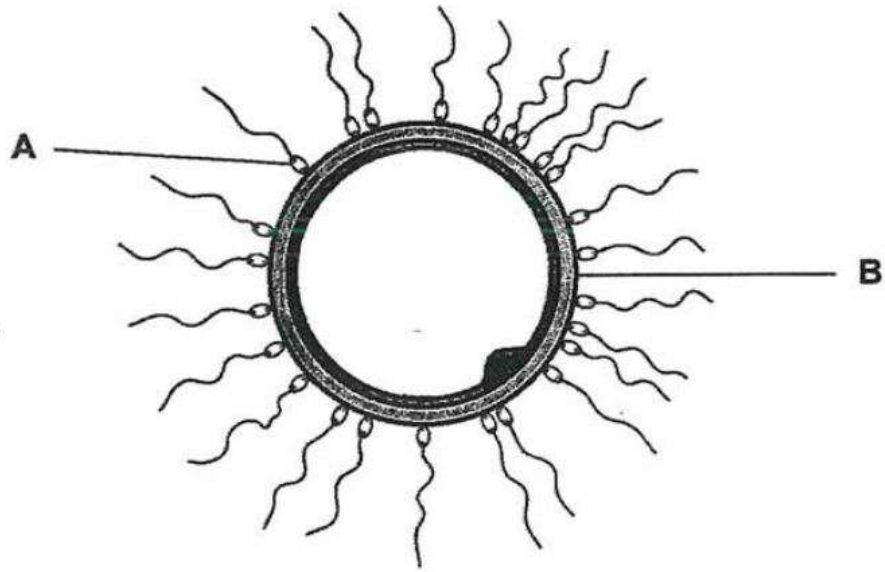
Identify part B.

Question 12 of 14

Primary 5 Science (Term 1)

1 pt

Study the diagram below carefully.



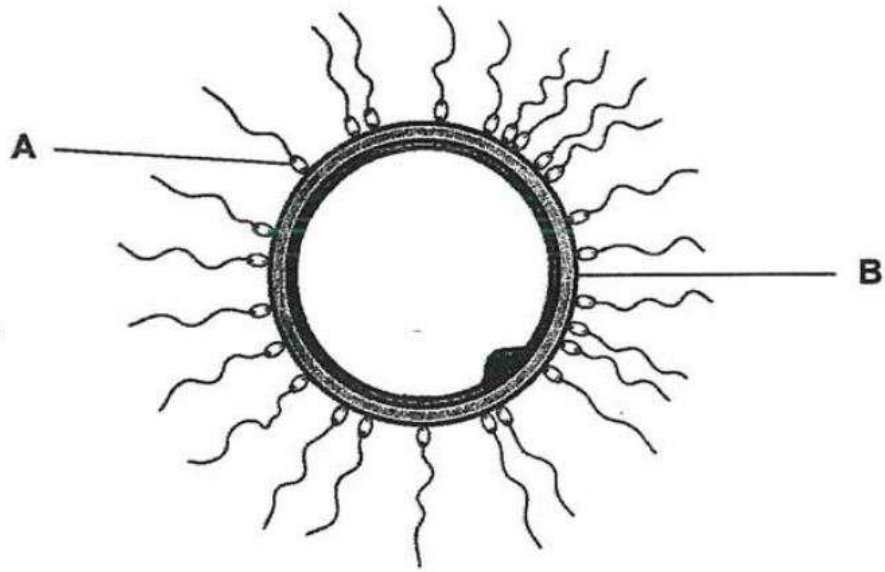
Identify the process that will happen in the diagram as shown above.

Question 13 of 14

Primary 5 Science (Term 1)

0 pts

Study the diagram below carefully.



Describe the process that will happen in the diagram as shown above. (1 mark)

This question is designed for extended answers that parent/ teacher will have to assign and guide child to attempt after the test has been completed.

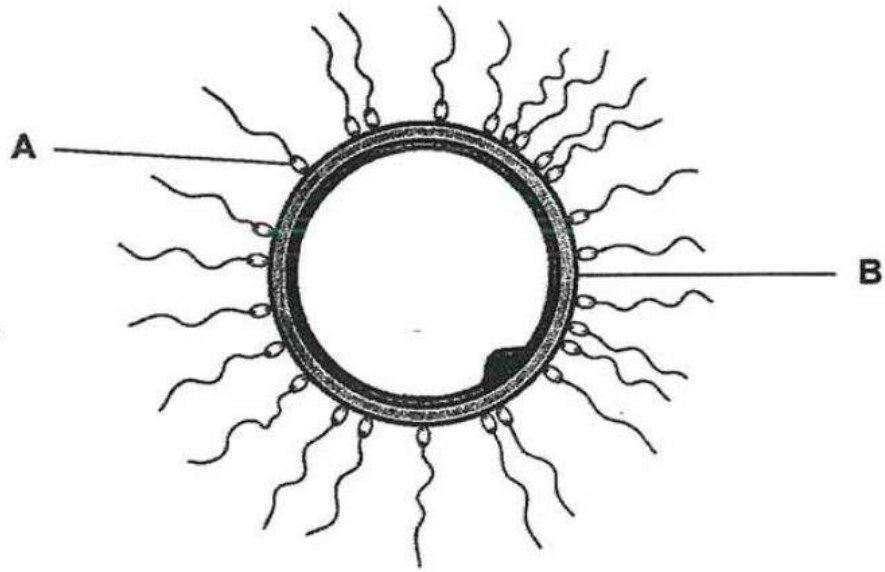
Grading: This question type is not graded on this system and will not affect the final score as it was designed in such a way that it requires manual assistance.

Question 14 of 14

Primary 5 Science (Term 1)

1 pt

Study the diagram below carefully.



In which part of the reproductive system would the fertilized egg develop into a baby? (1 mark)
